



GERALDTON GRAMMAR SCHOOL

Achieve · Inspire · Motivate



Secondary Handbook 2021

INTRODUCTION

Welcome to the Geraldton Grammar School community. This handbook is designed to assist parents of Geraldton Grammar School (GGS) by providing a brief overview of how the school functions and other information to assist you.

SCHOOL CONTACT

Telephone 08 9965 7800

Fax 08 9904 7176

External email access:

Portal (SEQTA Internal)

<https://ta.gegs.wa.edu.au>

Portal (SEQTA External)

[https://ta.gegs.wa.edu.au:](https://ta.gegs.wa.edu.au)

Portal (SEQTA External - mobile)

<https://tama.gegs.wa.edu.au:4430>

Email address

ggs@gegs.wa.edu.au

Website

www.geraldtongrammarschool.wa.edu.au

OFFICE HOURS

During term: 8.00am to 4.00pm

School holidays: **Closed**

VISION STATEMENT

Geraldton Grammar School will provide outstanding education and a strong sense of community, cultivating people of integrity, independence of mind and a love of learning.

MISSION STATEMENT

At Geraldton Grammar School we are striving for excellence today by challenging students in a supportive environment to prepare them for the changing world of tomorrow.

SCHOOL PHILOSOPHY

Geraldton Grammar School is an independent, co-educational school in the Anglican tradition. GGS aims to provide a community environment where the students are regarded as individuals and where the intellectual, spiritual, physical and social development of each one is fostered in a caring, inclusive atmosphere.

The school offers:

- A traditional educational philosophy, aiming at sound scholarship and striving for excellence.
- A whole school, where students can progress from kindergarten to year 12, reinforcing a sense of community.
- A balanced education, where children are encouraged to grow in a community of staff, students and parents: to become involved in the community outside the school and to develop a desire to serve it.
- An education which is Geraldton based, giving parents the opportunity to have a continuing input into their child's development.
- A focus on each child as a whole developing person, giving consideration to their emotional, moral and social development while guiding and encouraging them to fulfill their academic potential

HISTORY OF GERALDTON GRAMMAR SCHOOL

Geraldton Grammar School grew out of a desire in the community to have another option for education in the Mid-West. Planning for the new school began in 1992, and having obtained the approval of both state and federal governments, it opened with just 56 students in 1996.

Headmaster:

Mr Anthony Brooker Foundation Headmaster 1996 – 2000 (June)

Principals:

Mrs Susan Shaw 2000 (July) – 2013

Mr John Royce 2014

Mr Nick Johnstone 2015 – 2017

Mrs Neesha Flint 2018 -

Geraldton Grammar School began in premises rented from the Christian Brothers on the site of the old St Patrick's College. It moved to its own new school buildings on the school's 18 hectares site on George Road for the beginning of the 1998 school year. In 2020 we will have approximately 500 students from kindergarten to year 12.

SCHOOL VALUES

- RESPECT
- RESPONSIBILITY
- PERSEVERANCE
- INCLUSIVITY

SCHOOL MOTTO

Striving for Excellence

ACKNOWLEDGEMENT OF COUNTRY

Wording

We would like to respectfully acknowledge the Southern Yamatji Peoples who are the Traditional Owners and First People of the land on which we stand. The Nhanhagardi, Wilunya, Amangu. I would like to pay my respect to the Elders past, past, present and future for they hold the memories, the traditions, the culture and hopes of the Southern Yamatji Peoples.

Events at which the Acknowledgement will be spoken

- Events and functions hosted by Members of the Board or the Leadership team at which students, staff, parents and broader community members might be present.
- Significant gatherings of staff, students, parents or the broader community at which a welcome is provided to the group upon commencement.

Such events include, by example:

- Annual General Meeting of the School Board
- Chapel Services
- Significant School events
- Information evenings and social functions for parent groups
- Sub-school and whole school assemblies

Staff and students are invited and welcome to use the Acknowledgement of Country at their broader discretion throughout the life of the school.

SCHOOL EMBLEM

When the Dutch ship, the Batavia, sank off the Mid-West coast in 1629 it was carrying the building blocks intended to form the entrance gateway to the walled city of Batavia, now known as Jakarta. These stones were salvaged from the wreck of the Batavia, discovered off the Abrolhos Islands, and the gateway, a most impressive archway was reconstructed. It can be seen today at the Museum of Geraldton.

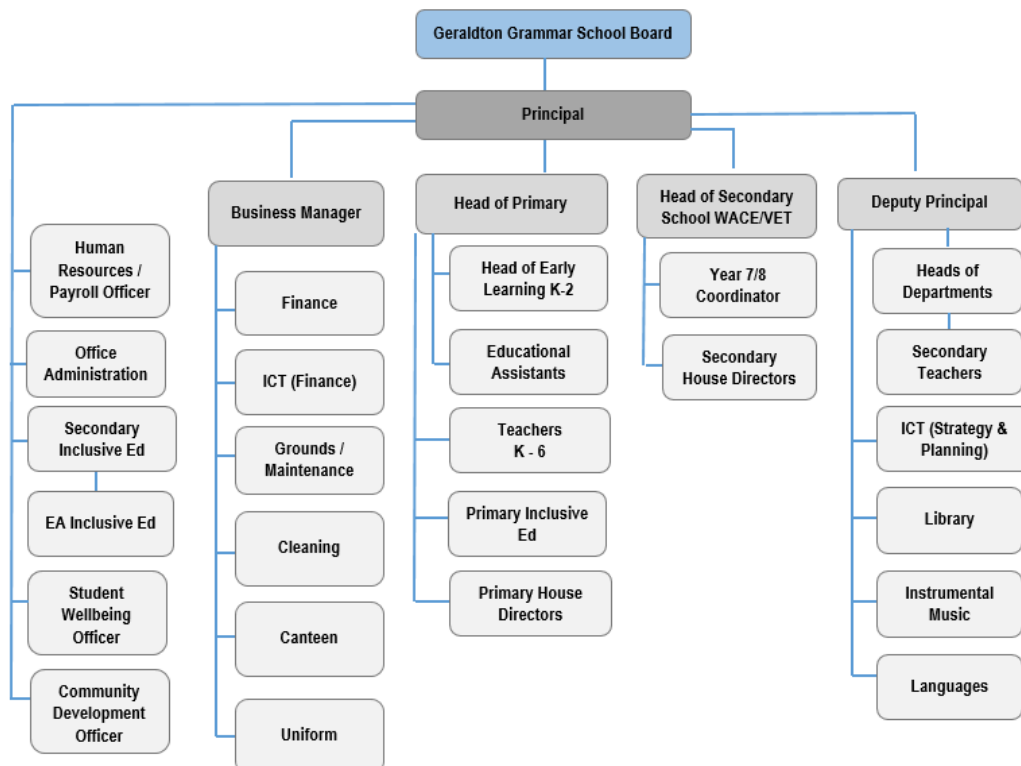


An arch is built from differently shaped pieces, supporting each other by mutual pressure, and thus able to support a greater weight. So do the students, staff, parents and the Board join together to form a mutually supportive and invincible structure.

Because of its historical relevance, and because of its inherent symbolism, the arch was chosen by the school as its logo. It represents the balance in education that the school wishes to achieve. The cross, which was introduced into the design for the school logo, signifies the Christian nature of the school. The arch logo was designed by the foundation Art teacher, Mrs Gina Hogue (deceased) in 1995 based on the suggestion of Mr Ian Blayney.

STRUCTURE OF THE SCHOOL

GERALDTON GRAMMAR SCHOOL ORGANISATIONAL CHART



SCHOOL PRAYER

Written by Mr Stuart Brooking, 1996

Heavenly Father

We thank you for our school

Thank you for the vision of its founders

For the generosity of its benefactors

For the leadership of its Board

For the encouragement of its parents

For the guidance of its teachers

And for the friendship of its students

We ask you in your kindness to watch over each
member of our school community

When we face trials give us strength

When we compete give us grace

When we prosper give us generosity

Please help us to grow in knowledge and wisdom so
that we may live to the greater benefit of our region,
our country, and all your creation.

We thank you, and ask these things in Jesus' name.

Amen.

SCHOOL SONG

To the tune of Lord of the Dance - Written by Mr John
Royce, 1998

Our school was founded with a vision in mind

Built to be the best school of its kind

Iron roof, clay brick and rammed earth wall

A safe place of trust and care for one and all

Chorus:

Strive then, to be the best you can

Trust in God when you make your plan

And the road ahead will be in harmony

With wisdom, faith and hope for you and me

The symbol of our school is the shape of an arch

Representing strength and a gate through which to
march

Our future rests in the choices that we make

Guide us and help us choose the path to take

Repeat Chorus:

Staff and students, parents and our school Board

Working all together as a family in accord

Courage of conviction and clarity of roles

Will see us march ahead and achieve our goals

Repeat Chorus:

THE SCHOOL DAY

We do not use bells or sirens and it is the responsibility of each staff member and student to ensure they arrive in class on time. Students who are late must report to the front office **before** going to class

Primary School Timetable Structure 2020

Period	Start	Finish
Classroom Opens	8.15	
Community Circle	8.30	8.45
Period 1	8.45	9.30
Period 2	9.30	10.20
Period 3	10.20	11.10
Recess	11.10	11.30
Period 4	11.30	12.30
Period 5	12.30	1.20
Lunch	1.20	2.05
Period 6	2.05	3.15

Secondary School Timetable Structure 2020

Period	Length	Start	Finish
HR (10 minutes)	HR	8.30	8.40
Period 1	50	8.40	9.30
Period 2	50	9.30	10.20
Period 3	50	10.20	11.10
Recess	25	11.10	11.35
Period 4	50	11.35	12.25
Pastoral/wellbeing period	40	12.25	1.05
Lunch	35	1.05	1.40
Period 5	50	1.40	2.30
Period 6	50	2.30	3.20

Secondary Pastoral Wellbeing period structure

	Monday	Tuesday	Wednesday	Thursday	Friday
Years 7-10	Assembly / Chapel (Alternating)	Dalton Method	Homegroup	Dalton Method / Year meeting	House Program
Year 11		Year level form / Protective Behaviours		Physical Education	
Year 12		(Alternating)			

Dalton Method – Years 7 - 10

Learning area support hubs. Students will work at their own pace, receiving support from teachers where necessary. Students will choose which learning area to attend, this may change each week depending on student requirements or teacher requests.

Early arrival at School

Start time in the mornings: School starts each day at 8.30am. There will be staff on duty at the school from 8.10am. *The school cannot accept legal responsibility for students who arrive before 8.10am.*

Assemblies & Chapels

Secondary School Assemblies and Chapel services are held on alternating fortnights on Mondays from 12.25pm to 1.05pm. Parents and friends are welcome to attend. Please note blazers are required for Assemblies and Chapel in terms 2 and 3.

THE SCHOOL CALENDAR

The School Calendar contains all events and activities that involve our community. This includes: Camps, Incursions, Excursions, Presentations, Exams, Information Nights, Community Events, Assemblies, Sport Activities, Musicals/Productions

It is available on SEQTA and the School website www.geraldtongrammarschool.wa.edu.au



HOMEWORK

Homework is expected. It can be set work, completing unfinished classroom tasks, investigations, projects, research, reading, spelling etc. It is an essential part of a student's learning as it requires time management skills and organisational skills which enhance learning.

Secondary School staff supervise a supportive homework environment most Wednesdays from 3.20pm to 4.15pm in the library. Boarders are expected to attend.

Time recommendations for homework are as follows for a FIVE day week:

Age Group	Activity	Per Night
Junior Primary	Home reading	10 – 20 minutes
Middle Primary	Home reading, work completion	10 – 30 minutes
Upper Primary	Reading, work completion, investigations/projects, research	30 – 45 minutes
Year 7	Set work, work completion, investigations/projects, research, revision/study	50 - 70 minutes
Years 8 and 9		60 - 90 minutes
Year 10		90 - 120 minutes
Year 11		120 - 150 minutes
Year 12		180+ minutes

Library Opening Times

The Library opens daily at 8.00am and closes at 4.00pm.

CO-CURRICULAR AND WELLBEING

Our co-curricular wellbeing programs are designed to introduce students to a variety of challenges, encouraging them to move out of their comfort zone. When this happens, students become open to new experiences and are more willing to see things from a different perspective.

Homegroup

Students in years 7 – 12 are organised into pastoral care, vertical Home groups for purposes of roll calls, daily notes and diary signing. These groups are organised on a House basis. The Home group teacher is responsible for all things concerning the welfare of the student (including reporting).

Home groups meet for 10 minutes at the beginning of each day and 40 minutes before lunch on Wednesday, this is a Pastoral/Wellbeing period.

Personal Development Program (PDP)

The Personal Development Program runs from years 7-10 and is instrumental in providing our students with thinking, organisational and study skills. It also covers aspects of the Protective Behaviours curriculum that is not taught in health classes, primarily aspects relating to mental health and developing coping strategies.

In addition to theory, students are also involved in practical service-based activities which allow them to give something back to the greater Geraldton community.

Spiritual

At Geraldton Grammar School, we believe that a good educational program develops all aspects of a student's character. An important part of this process is the development of a student's spiritual life. This process begins at kindergarten and continues throughout the student's schooling. Religious education lessons and a weekly chapel service are conducted in the primary school. The secondary school also has fortnightly chapel services.

Camps

Camps are an integral aspect of a child's education at Geraldton Grammar School and supports classroom learning through experiential learning. Camps are held as part of the program in Years 3-12. It is an expectation that teachers will accompany their classes to camp; The nature of each camp varies and is age appropriate. Further information regarding camps at a given year level may be obtained from the respective Heads of School.

Primary camps:

- Year 3 - Sleepover at school,
- Year 4 - Geraldton Camp School
- Year 5 - Perth
- Year 6 - Canberra

Secondary camps:

- Year 7 -10 camp week are in week 3 of term 3 each year.
- Outward Bound occurs for all students in years 9 and 11 in term 4.

Sport

The school seeks to both use and contribute to the sporting facilities of the Geraldton community. The school enters competitions with other schools in the region including swimming and athletics carnivals, and field teams in local competitions such as hockey, rugby union, touch rugby, netball and tee-ball.

While all students are encouraged to participate in team sports, participation in out of school activities which foster the same team spirit, such as cadets or sea scouts, is also encouraged.

Country Week - Perth

Students in years 8 to 10 can participate in the District High School Competition in Perth at the end of term 3.

Students in years 11 and 12 can participate in the Senior High School Competition in Perth, at the end of term 2 each year.

Cultural

Our Instrumental Music Program (IMP) and additionally School choirs, concert band and percussion ensembles are designed to enhance the education of children through their involvement in a quality music program. We provide a number of opportunities for students to perform for both the school and in the wider communities at various events such as the Geraldton Music Festival, school productions and Arts Festival.

Compass

The Compass Awards, a precursor to the Duke of Edinburgh Awards, are for students aged 10 to 14 years. Primary is coordinated by Ms Nicky Martin and Secondary school is coordinated by Mr Simon Moffatt.

Round Square

Geraldton Grammar School has been a member of the world wide school organisation of Round Square since 2003. The philosophy is based on the IDEALS – Internationalism, Democracy, Environment, Adventure, Leadership and Service. Students have the opportunity to participate in school exchanges, service projects and conferences within Australia and internationally. The Round Square coordinator is Ms Neesha Flint

Interact

Geraldton Grammar School is able to offer to students Interact, sponsored by the Batavia Coast Rotary Club. This is a club for young people ages 12-18 who want to come together to tackle the issues in their community they care most about. Through Interact, students can carry out hands-on service projects, make international connections, develop leadership skills and have fun.





House

The House system is an integral part of Pastoral Care at Geraldton Grammar School and provides for another group in the school that students can identify with. Students wear their House shirts with their PE uniform every Friday.

Each House has a staff member as a director and most staff are allocated to a House.

Students across the school take part in a variety of House activities throughout the year including Cross Country, Athletics and Swimming Carnivals.

The students are allocated one of the four Houses as described in the table below:

House	Chapman	Greenough	Irwin	Murchison
Emblem				
Emblem	Geraldton Wax	River Gum	Wattle	Crayfish
Colour	Red	Green	Yellow	Blue

Student Leadership

It is important for students to experience leadership opportunities during their schooling, to learn the art of building relationships within teams, defining identities and achieving tasks effectively. It also provides an opportunity to learn to identify and display effective communication and interpersonal skills.

Representative Council

The Student Representative Council is made up of elected representatives from each of the Houses. The Schools are also on the Council. The Student Council meets to discuss issues that are raised by students. The Council also runs the in-school assemblies and Chapel and assists in the running of special events that occur throughout the year.

School Captains

In term 3, year 11 students nominate through a written application process for a leadership position. The students make a speech to the secondary school body who then vote. The induction of elected Captains is held at the Year 12 Valedictory Assembly each year at the start of term 4.

The Secondary Captains are comprised of

- School Captains
- Arts and Sports Captains
- Service and Academic Captains
- House Captains

Throughout the year, students will elect Hub Captains from years 7 to 11. These Hub Captains are elected for the semester and will partake in the leadership activities at the school.

STUDENT CULTURE AND EXPECTATIONS

The guidelines for student behaviour are based on promoting the School's Values. Students of Geraldton Grammar School will see that their efforts and contributions are valued and acknowledged in a supportive environment, where purposeful practice, positive contribution, and inclusivity are key components of belonging effectively to the School community. All students are expected to adhere to the Student Code of Conduct that will be outlined to them in their respective areas of the School.

Conduct

All students are expected to conduct themselves courteously and appropriately in the classroom, within buildings, on school grounds, on outings, at camps and in the community, whether in or out of school uniform.

Cigarettes, alcohol and other drugs are strictly forbidden.

Bullying

The school will not tolerate bullying of any kind. There is a pamphlet available from the school outlining Geraldton Grammar School's policy on bullying which we encourage all students to read. There is also a section in the student diary.

Students involved in bullying will face consequences in accordance with the school community's Managing Student Behaviour policy and guidelines which is available for all parents to read in hard copy, or can be found on our website. Staff involved in bullying activities will be managed in accordance with the performance management policy of the school.

Discipline

It is neither the policy nor the philosophy of the school to have lists of rules and regulations. Common sense and care and consideration of others should underpin all behavior. It is expected of students that they be punctual, diligent and apply themselves to the business of study and homework. In their dealings with all members of the school community, polite, kind and self-disciplined behavior is expected.

The Positive Behaviours Policy outlines the School's position and is used by staff in promoting positive behaviours across the school.

Drug Policy (Extract)

The school drug policy provides a framework to address alcohol, tobacco and other drug related problems in a caring and consistent manner within the Geraldton Grammar School community.

The policy applies to school visitors and any functions held on school premises, external bookings at the Geraldton Grammar School hall may be licensed to serve alcohol but the appropriate licence must be obtained.

Geraldton Grammar School does not permit students while on school premises, at any school function, excursion or camp to:

- Smoke and/or possess tobacco products.
- Consume and/or possess alcohol.
- Deliberately inhale volatile substances (solvents).
- Possess and/or use pharmaceutical drugs for non-medical purposes.
- Possess and/or use illegal drugs in accordance with the Misuse of Drugs Act 1981.
- Possess and/or use drug-related equipment, such as syringes, bongs or pipes (except in the case of lawful medical use).
- Be in the company of students whilst they are involved in the above activities.

Students contravening these rules will be offered counselling and will face disciplinary action in accordance with the school community's Management Student Behaviour program.

COMMUNICATION

Student/Family Details

Parents are responsible for contacting the school to update their details should there be **any** changes to their student/family information or family circumstances.

It is **particularly** important that email addresses are up-to-date, as this is the prime source of communication between the school and home.

Student Diary

Students in years 9 to 12 are expected to use a form of electronic diary in conjunction with SEQTA.

Email

Student email address, example for John Brown – j.brown18@gegs.wa.edu.au (the 18 represents the year the student would graduate in year 12 eg 2018).

Staff email address, example for Mr John Brown – john.brown@gegs.wa.edu.au

SEQTA

SEQTA is an important part of both the student and learning management system at GGS (Geraldton Grammar School). Teachers use the software to enable programming and assessment data to be shared with students. In secondary, students will see timetables, course materials, assessment dates, results and feedback on learning. Likewise, SEQTA enables students to track their progress particularly in secondary courses, ensuring that they have an awareness of how they are performing.

SEQTA CONEQT for parents is a platform enabling parents across the school to keep abreast of their child's school routine, subjects, upcoming assessments, absenteeism and more. In addition it is used to provide feedback to students and parents on student performance in individual assessments and include 3 explicit statements

- Where the students are in their learning (What they can do)
- Where are they going (next steps)
- What do they need to do to get there.

All students and parents are provided with a username and password which they use to log into the software. Students use the same username and password that is used to log into the school network. The software is web based, allowing students access from any web platform be it at home or school, and as such helps the students keep themselves organised.

Performance and Communication - students will have access to results published on SEQTA.

- Behaviour – primary and secondary school teachers will record poor behaviour on SEQTA.
- A key element to communication is feedback provided through mark's books in SEQTA. All secondary staff are required to upload marks and feedback for students and parents into SEQTA within 2 weeks of the assessment being completed.

Reporting

Reporting is both formal and informal. Students will set goals, reflect upon their progress and demonstrate their learning.

Teachers plan relevant learning programs as directed by SCSA (Schools Curriculum and Standards Authority) and students individual capabilities

The reporting format in Secondary may include the following:

- The use of parent CONEQT in the secondary and primary school.
- Three Way Conferences – involve parent, student and teacher in an interview to discuss pastoral and/or academic progress.
- Curriculum Information Evening.
- Mid-year report (semester 1) and end of year report (semester 2).
- Other communications specific to the individual.

Geraldton Grammar School has aimed to develop a reporting system which is meaningful and relevant to our school community.

Newsletters

The fortnightly Grammarphone is emailed to parents or found on the School's website www.geraldtongrammarschool.wa.edu.au. The Grammarphone contains relevant information pertaining to upcoming events related to the school and its students.

Beacon

The Beacon is produced twice a term and highlights events that have occurred during the term. Parents/guardians are notified when it is available to view on the school's Facebook Page and website.

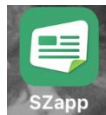
Archway Magazine

The school magazine, *The Archway*, is published annually and provides an interesting record of the school year. Each family receives one copy.

GENERAL SCHOOL INFORMATION

Attendance & Absenteeism

Absenteeism may be reported via phone 08 9965 7800, by email ggs@ggs.wa.edu.au or through the school's Schoolzine app



Western Australian law stipulates that all school-aged children must go to and attend school every day.

The School is required to keep accurate attendance records for all its students. This includes taking attendance:

- in the morning and afternoon for students in Kindergarten to Year 6
- at every lesson for secondary school students.

It is also a requirement that the absence is explained. If your child is absent on a particular day please notify the main administration office by one of the options above before 8.30am. The school office will ring to confirm your child's absence unless prior contact has been made.

If you know your child will be absent in the coming days, please inform the main administration office by phone or email prior to the absence.

If a student is more than 5 minutes late you and/or your child, must report to the main administration office to either record the student's attendance.

Extended absences from school, for recreational purposes, are discouraged. However, should your child/children require an extended period of time away from school you must formally notify the Principal in writing or via email **prior** to the absence.

If you take your child from school during the school day for an appointment you are required to collect him/her from the front office where the student will be signed out on the computer. If returning to school the student must report to the main administration office, **before returning to class**, to be signed in.

Punctuality

Punctuality is essential to the smooth running of the school. We do not use bells or sirens and it is the responsibility of each student to ensure they arrive in class on time.

Students who are late must report to the main administration office **before** going to class.

Bus Travel to and from School

Geraldton Orange School Buses – School Contact 08 9326 2840, to apply go to www.schoolbuses.wa.gov.au

School buses bringing students in from outlying areas not from within the town boundaries. These services are operated under contract by individuals on behalf of the Public Transport Authority. This service is free to eligible students.

Town Bus Service - Contact Bus West 9923 2225

All students within the Geraldton town boundaries (including Drummond Cove, Tarcoola, Wandina, Woorree, Deepdale) can catch the town public or school only designated services.

Children using buses are expected to travel in full school uniform. Smart rider cards can be ordered through the front office. The first card is free, a replacement card can be ordered at a cost of \$5.

Lost Property

All items brought to school (uniforms, lunch boxes, iPads etc) should be **clearly marked with your child's name and class**. It is difficult to find an owner if the lost item is unmarked.

Lost property is held in the Administration office or if a secondary student's name is on an item a notice will be placed in the Daily Notices for collection.

Student Lockers

Lockers are available to all secondary school students. Students are allocated a locker at the commencement of the school year. The cost of a lock for new students is \$16 and added to the school statement. Existing students should retain their lock from last year. For information on the use of padlocks please view the video on SEQTA.

Canteen

The canteen is open every day to provide lunch and recess, The menu varies with winter and summer terms. Online ordering is available at <https://mykidslunchbox.com.au> , the canteen also has EFTPOS facilities.

Parents & Friends Association

The school is blessed with a very active Parents and Friends Association. It is involved in fundraising, organising social events which bring together the members of the school community and offering practical and invaluable help at school functions and occasions, eg athletics carnivals and open days. Monies raised by the Parents and Friends help greatly in the acquisition of resources for the school. Facebook – Geraldton Grammar School P&F

Email – parents.friends@gegs.wa.edu.au

Accident Insurance

The school has in place an accident protection plan for all full time students of the school. The cover is 24 hours a day, 365 days a year. A brochure and claim form is available through the office.

Scholarships

Academic Scholarships are available to students in years 7 to 12. Scholarships include remission of half of the student's tuition fees. Scholarship recipients will have their academic performance reviewed by the Principal annually and their scholarships will be renewed should their academic performance be maintained.

Scholarship exams are held each year in May and are managed by Australian Council for Educational Research (ACER) and coordinated at the school by the Deputy Principal. All information or enquiries can be made through the school website.

POLICIES

The following policies apply to all students, the full policies are available through the school's website www.geraldtongrammarschool.wa.edu.au and through SEQTA Engage.

Mobile Phone Policy

This includes mobile phones, iPods, BYODs and iPads

Students should make themselves, and their parents, aware of the Mobile Phone Policy. This policy is in student diaries and is available on the school website.

Student Drivers

Students who have gained their driver’s licence and wish to drive to school, must undertake an agreement with the school administration. A copy of the policy and agreement are available from the school office and on SEQTA. Students who have been granted permission to drive a motor vehicle to school are to enter the school, park the vehicle (and lock it) in a designated area and, before school commences lodge the keys at the school administration.

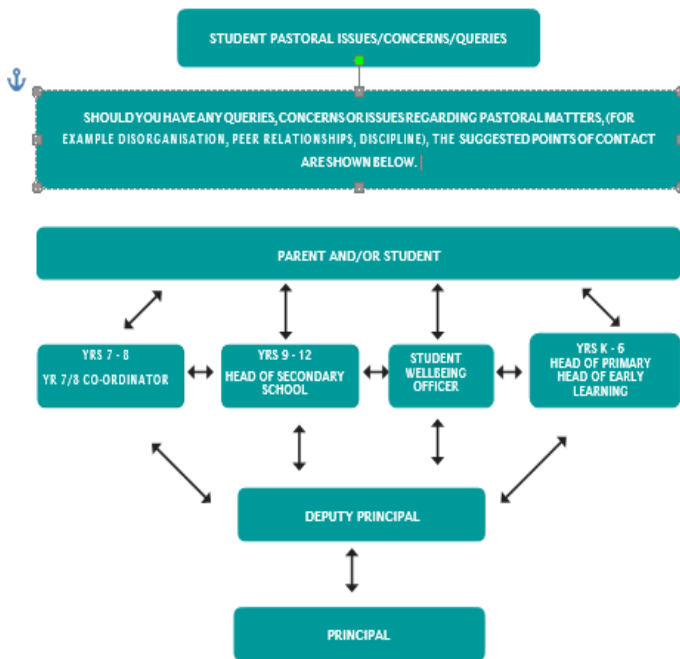
Sun Safe Policy

The “no hat, no play” policy is followed throughout the school. Students are also encouraged to apply sunscreen, particularly in terms 1 and 4.

Complaints Policy

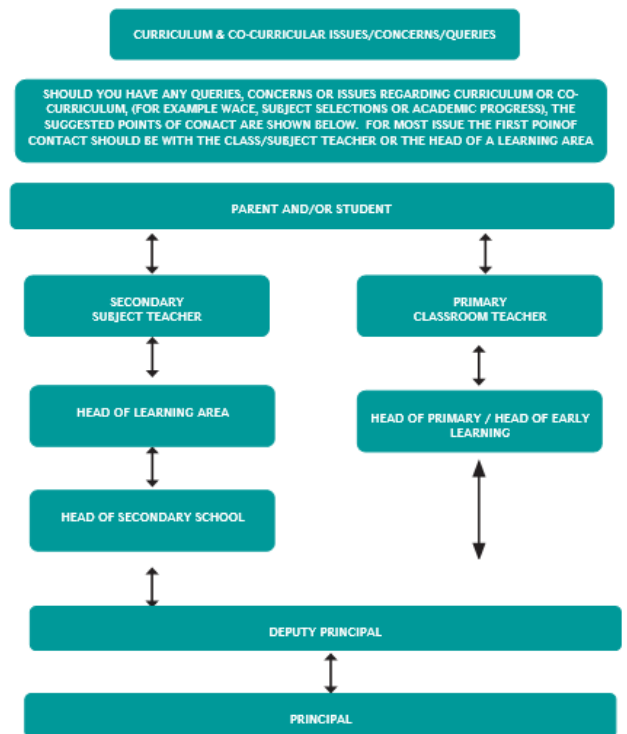
The Parents and Students Complaint Policy is available through the School’s website. The process for a grievance or complaint is below:

Appendix 2 – Student Pastoral Care



If a complaint is not satisfied by decision of the Principal, the matter may be referred to the Chair of Board for review.
The review by the Chair shall be final, binding on the complainant and the School and the last step in this Policy.

Appendix 3 – Curriculum and Co-Curricular Issue



If a complaint is not satisfied by decision of the Principal, the matter may be referred to the Chair of Board for review.
The review by the Chair shall be final, binding on the complainant and the School and the last step in this Policy.

Student Dress Code Policy

Geraldton Grammar School prides itself in the appearance of its students when wearing the school uniform. Students often receive very positive comments when attending incursions and excursions outside of the school.

This policy provide students, teachers and parents with clear guidelines regarding the wearing of the school uniform.

The school uniform should be worn correctly at all times. This means that students may not mix and match items of sports uniform and the regular uniform. Full school uniform is always to be worn to and from school, even if travelling by car or bus. The uniform needs to be worn correctly both at school and in the general public.

- Students should show pride in their uniform and dress as a mark of self-respect.
- We particularly ask the students to remember that the community judges the whole school by how individuals from the school behave. Therefore, they should take care to dress and act appropriately.
- It is the responsibility of each student to clearly mark each article of clothing and all other possessions.
- Jewellery is to be limited to a watch and one pair of matching small plain stud earrings or sleepers in school colours of white, blue, teal and black, silver or gold. Earrings to be worn in the lowest hole in the ear lobes only. Transparent plastic earrings/nose studs are not permitted. Inappropriate jewellery will be confiscated and may be collected at the end of the school day or term for continuous infringements. A discrete silver or gold religious medallion may also be worn. Only badges supplied by Geraldton Grammar School may be worn.
- Girls may use hair ribbons, hair clips, head bands or scrunchies in the school colours of white, navy, or teal. Hair bands can be black. These may be in a student's house colour when students are required to wear House uniform.
- Hair, if longer than shoulder length must be tied up, and is to be restrained by elastic bands or by hair ribbons, hair clips or scrunchies in the school colours of white, navy or teal only. The general effect should be one of neatness and cleanliness. Hair styles should not contain undercuts or other excessive changes in length, or unnatural colours. The use of a blade lower than "2" is not permitted. All haircuts must be blended and uniform in appearance. The school reserves the right to determine acceptability or otherwise of students' hairstyles.
- Male students are to be clean shaven.
- Mobile phones must not be carried in a student's shirt/ blouse pocket.
- Students must not walk through the school with headphones in their ears or dangling around their neck.
- Students must not mix and match uniform types. E.G Mix sports uniform with summer or winter uniform.
- No makeup or nail polish is to be worn with the school uniform.
- Hemlines on girls' summer dresses and winter skirts should be at a respectable length, on or near the knee.
- It is acceptable to wear plain navy discreet shorts under dresses on windy days.
- School shoes - Black lace-up leather shoes must be polished and in good condition. Navy sandals are also an option in summer months.
- Uniform must be in good condition: clean with no buttons missing.
- Students need to only wear hats when in the sun. For example, if walking across to get to a building that requires going through a sunny spot, you need to wear your hat. Students must always have their hat with them.

- Shirts must be worn neatly and tucked in, except for playing sport on the school oval and basketball courts. At the conclusion of this activity students must ensure they are dressed according to school policy.
- Sports shoes must be proper trainers that protect the feet for physical pursuits.

Unacceptable Sport Shoes:

Examples of gym boots slip on shoes, Vans and Converse.



Uniforms

Uniforms

Boys - Summer

White school shirt
Navy socks
Navy school hat

Navy shorts or long navy pants
Black shoes or navy sandals
School belt (optional)

Boys - Winter

White school shirt
School tie
Navy socks
Black shoes
Navy school scarf (optional)

Long navy pants or navy shorts
School belt (optional)
Teal sweater
Blazer
Navy school hat

Girls - Summer

Blue dress
White school overblouse
White school socks

Blue culottes
Black shoes or navy sandals
Navy school hat

Girls - Winter

Tartan skirt or culottes
School tie
Navy tights or white school socks
Blazer (compulsory in years 6 – 12)
Navy school hat Navy school scarf (optional)

White school overblouse
Teal sweater
Black shoes

Sports Uniform (Boys and Girls)

White school socks
Lightning bolt polo shirt
House polo shirt
School tracksuit

Navy shorts
Navy school hat
Trainers
School bathers (optional for primary)

Uniform Items to be phased in:

Item	Phase in:	Compulsory in:
School Tracksuit: With embroidered school arch on the jacket	2019	2020
Lightning Bolt Polo Shirt:		
Students representing the School	None	2020
All students	2020	2021
House Polo Shirt:		2020
Sports Shorts: With embroidered school arch	2020 - 2021	2022
School Bathers		
Students representing the School	None	2020
All Secondary students	2020 – 2021	2022
New School Hats:	2020 - 2021	2022

The Geraldton Grammar School bag and sports bag are compulsory.

Students are not to take bags other than school approved bags to sporting venues or outings when in school/sports uniform.

Formal Uniforms

Summer:

Girls - Culottes and white school overblouse or blue dress, black shoes and white school socks.

Boys - Navy shorts, white school shirt, black shoes and navy socks.

Winter:

Girls – Tartan skirt/culottes, white school overblouse, tie, black shoes and white school socks (PP–year 6) navy tights (years 7–12) and blazer.

Boys - Long navy pants, white school shirt, tie, black shoes and navy socks and blazer.

Blazers are compulsory for students in years 6 – 12 (winter only). However, students are also required to wear their blazer to all Chapel Services and assemblies during terms 2 and 3.

Specific Ties:

Teal stripe

Years 7 - 8

Blue stripe

Years 9 - 12.

Note: Any school item that bears the arch must not have graffiti on it, e.g. diary, bag, hat. A student can be asked to replace these items if such damage occurs.

Uniform Shop Opening Hours

The Uniform Shop will be open at the following times each week during the term:

Tuesday afternoons 1.00pm– 4.00pm

Thursday mornings 8.00am– 11.00am

Alternatively, order forms may be filled out and left at the school office. School hats and ties can be purchased from the Finance Office.